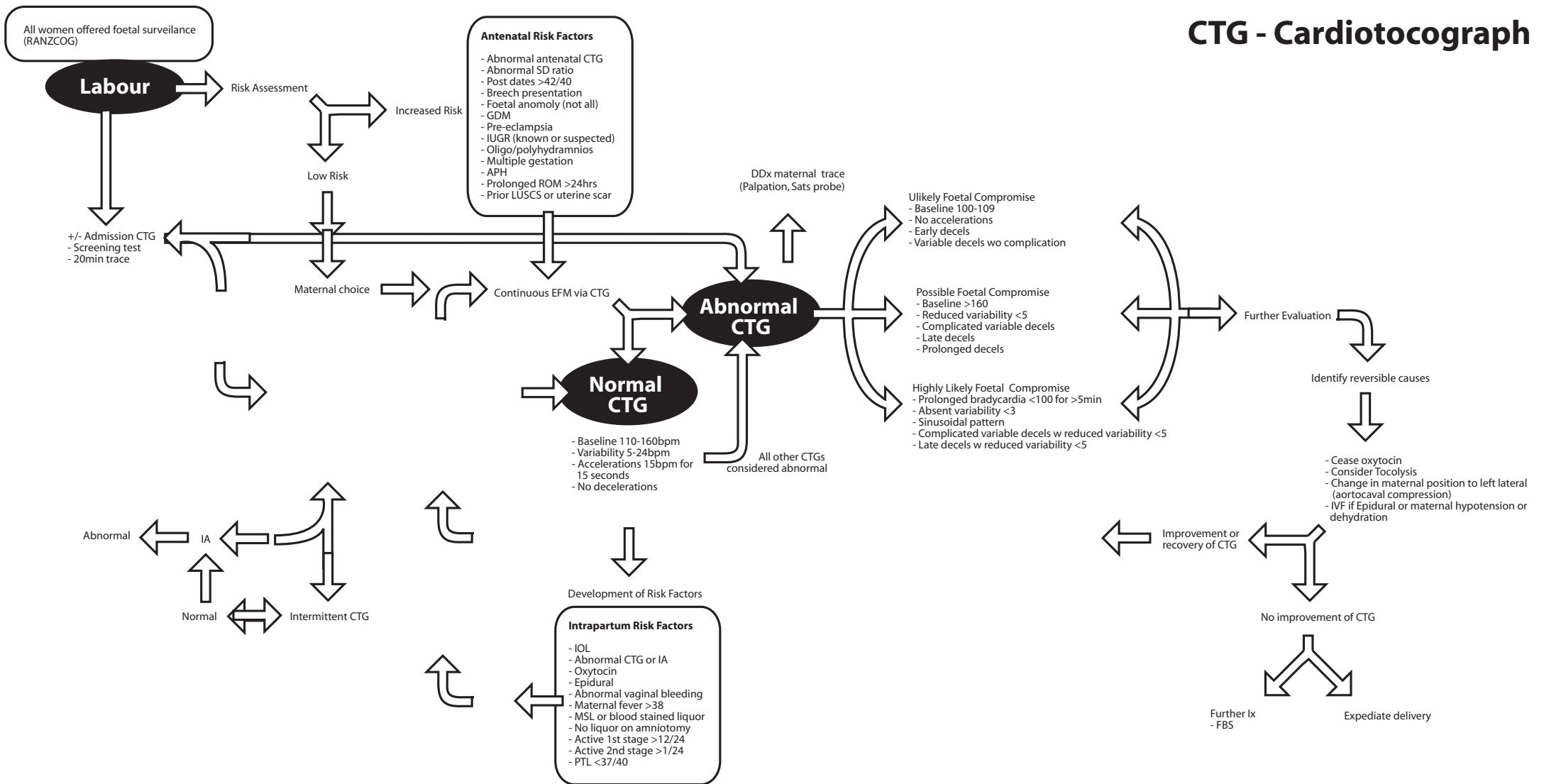


# CTG - Cardiotocograph



DR C BRAVADO

D  
R  
C  
Br  
V  
A  
D  
O

APH = Antepartum Haemorrhage  
 GDM = Gestational Diabetes Mellitus  
 ROM = Rupture of Membranes  
 CTG = Cardiotocograph  
 FBS = Foetal Blood Sampling  
 IOL = Induction of Labour  
 IA = Intermittant Auscultation  
 MSL = Meconium Stained Liquor  
 PTL = Preterm Labour