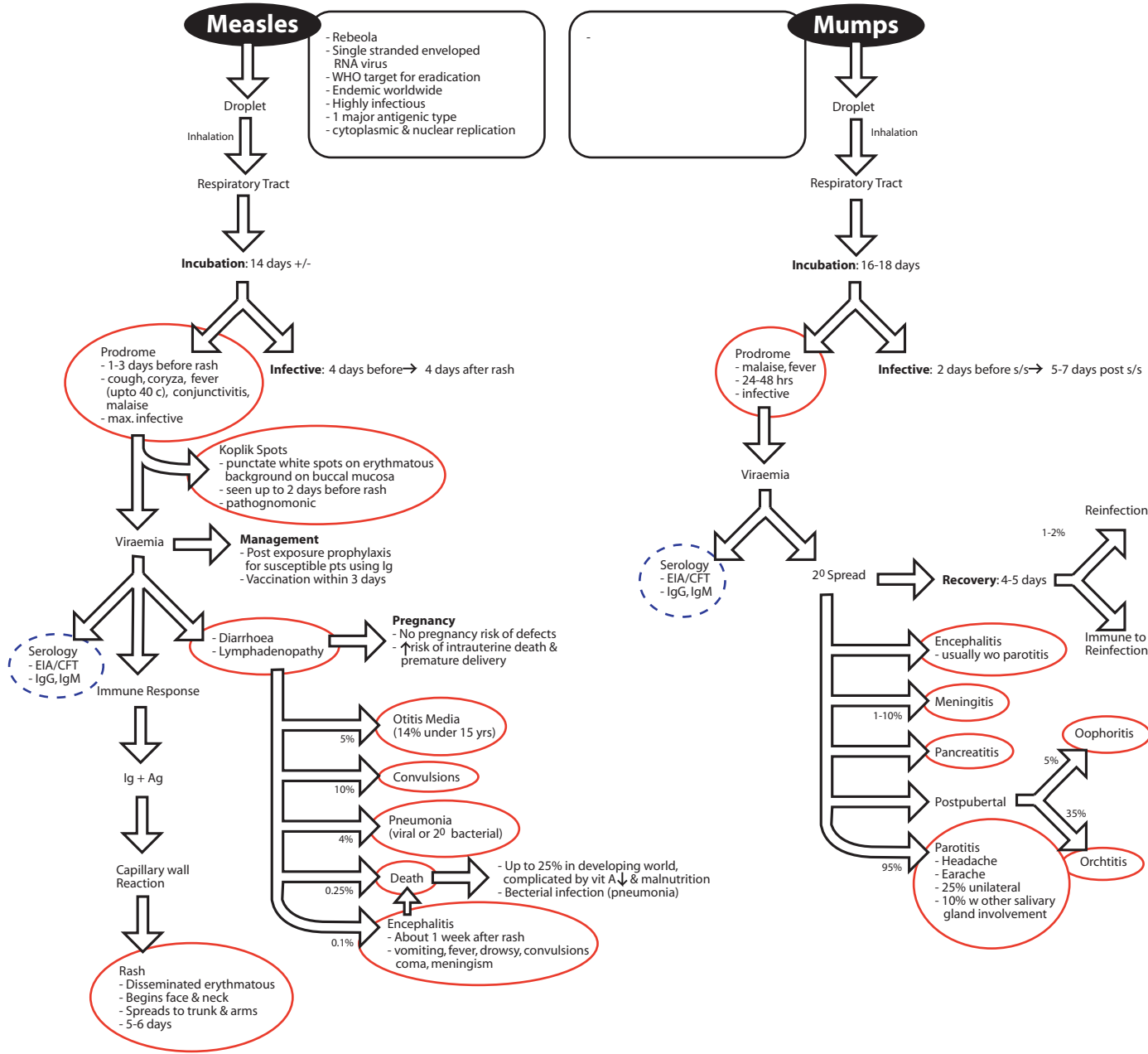


# MMR Vaccine



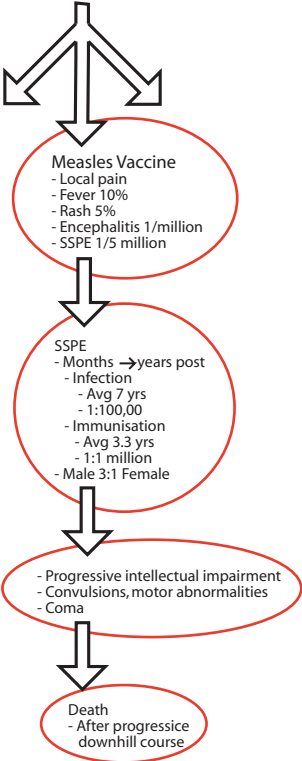
**MMR Vaccine**

- Measles, Mumps & Rubella viruses
- Live attenuated vaccine
- Given @ 12-15 months w booster @ 4-5 yrs (to cover those who miss 1st dose or who respond poorly)
- Mothers IgG interferes w seroconversion any earlier
- Problem in developing countries as most infections are in children < 12 months old
- 75-85% Effective

**Contraindicated**

- Egg allergy
- Pregnancy
- Immunocompromise (Except HIV children)

**Side Effects**



MMR - Measles, Mumps, Rubella  
 SSPE - Subacute Sclerosing Panencephalitis  
 EIA - Enzyme Immunoassay  
 CFT - Complement Fixation Test  
 Ig - Immunoglobulin  
 Ag - Antigen